

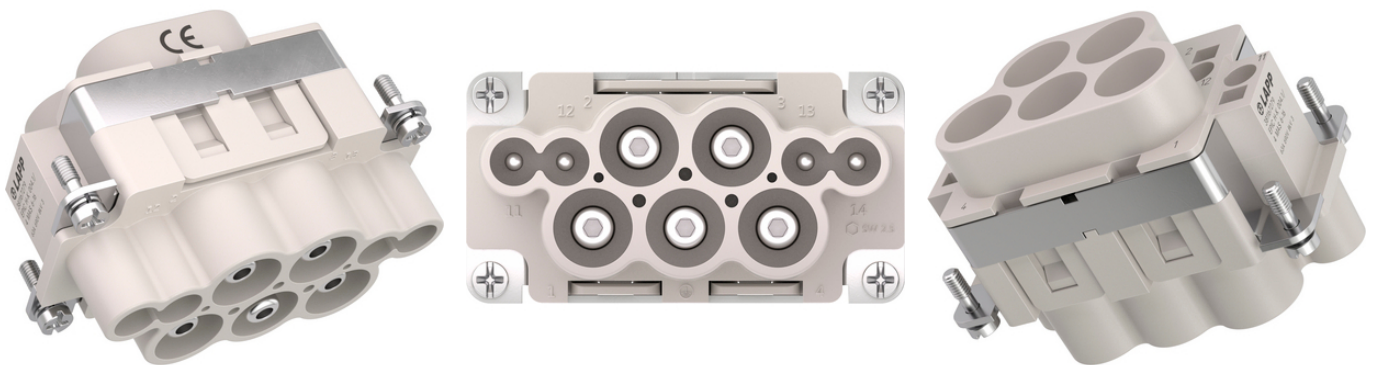
EPIC® H-K 4/4

Combination insert Power and Control

The combined insert is suitable for power and control and can be used, for example, in the area of recoverable energy and control systems.

Info

Combination insert Power and Control



Supplementary automation components from Lapp



Mechanical and plant engineering



Wind Energy



Temperature-resistant

Benefits

Power and control in one connector insert

Application range

Mechanical engineering
Control engineering
Renewable energy

Technical Data

Classification ETIM 5:

ETIM 5.0 Class-ID: EC000438

ETIM 5.0 Class-Description: Contact insert for industrial connectors

Classification ETIM 6:

ETIM 6.0 Class-ID: EC000438

Last Update (08.08.2025)

©2025 Lapp Group - Technical changes reserved

Product Management www.lappkabel.de

You can find the current technical data in the corresponding data sheet.

PN 0456 / 02_03.16

EPIC® H-K 4/4

ETIM 6.0 Class-Description: Contact insert for industrial connectors

Rated voltage (V):	690 V 250 V
Rated impulse voltage:	8 kV 4 kV
Rated current (A):	63 A 16 A
Pollution degree:	3
Flammability:	UL94 V-0
Contact resistance:	< 5 mOhm
Number of contacts:	4 + 4 + PE
Termination methods:	Axial Screw termination: 6 - 16 mm ² Cage clamp termination: 0.14 - 2.5 mm ²
Stripping length (mm):	11 mm 9 mm
Material:	PC, polycarbonate
Cycle of mechanical operation:	500
Temperature range:	-40 °C to +125 °C

Note

PE connection with a 16mm² wire only with the recommended ring lug 44424029

The inserts must be used with the appropriate housings

Photographs and graphics are not to scale and do not represent detailed images of the respective products.

Prices are net prices without VAT and surcharges. Sale to business customers only.

To connect stranded conductors, use an end sleeve.



EPIC® H-K 4/4

Article number	Contact type	Number of operating contacts	Packaging unit
381167281	female	8	1
381167279	male	8	1
381167282	female	8	1
381167280	male	8	1

Last Update (08.08.2025)

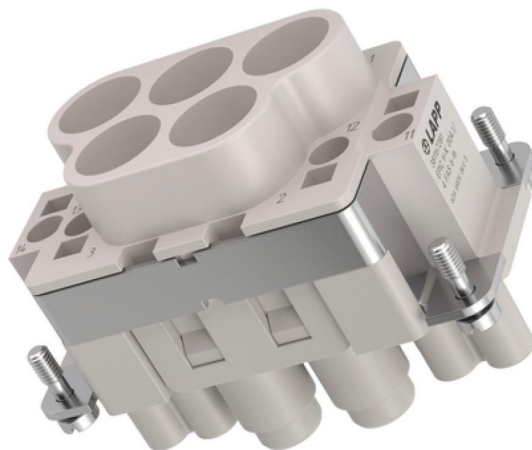
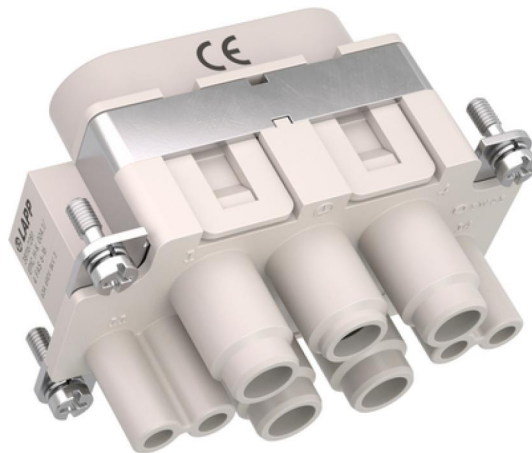
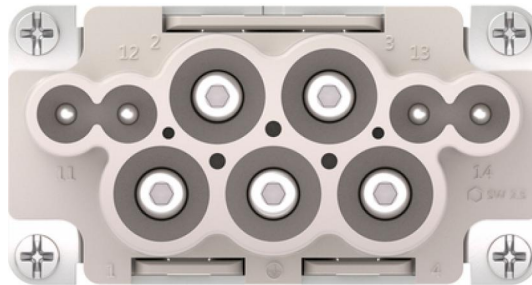
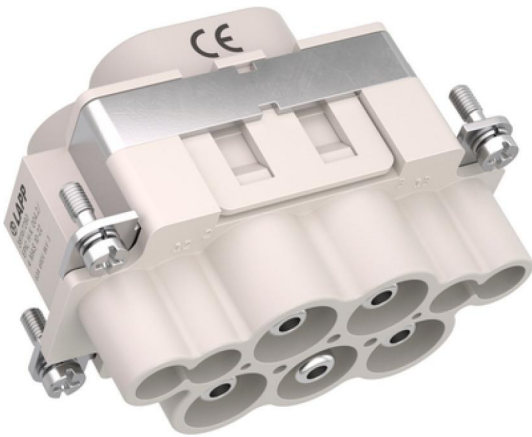
©2025 Lapp Group - Technical changes reserved

Product Management www.lappkabel.de

You can find the current technical data in the corresponding data sheet.

PN 0456 / 02_03_16

EPIC® H-K 4/4



Last Update (08.08.2025)

©2025 Lapp Group - Technical changes reserved

Product Management www.lappkabel.de

You can find the current technical data in the corresponding data sheet.

PN 0456 / 02_03.16

EPIC® H-K 4/4

