

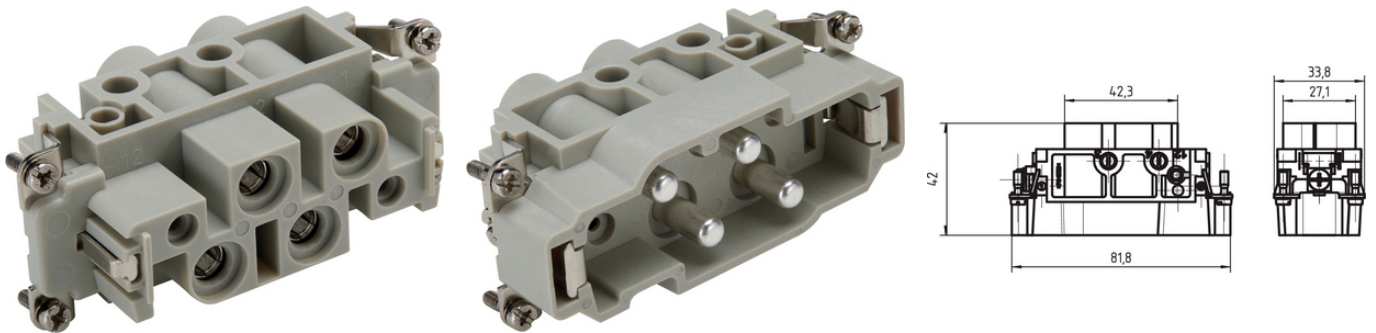
EPIC® K 4/0

Combination insert Power

The combined insert ensures a very high power output concentrated in a single insert and is ideal in combination with the ÖLFLEX SERVO cable.

Info

Combination insert Power



Supplementary automation components from Lapp



Mechanical and plant engineering



Wind Energy



Temperature-resistant

Benefits

High power in one connector insert
Best in combination with ÖLFLEX® SERVO

Application range

Mechanical engineering
Control engineering
Renewable energy

Technical Data

Classification ETIM 5:

ETIM 5.0 Class-ID: EC000438

ETIM 5.0 Class-Description: Contact insert for industrial connectors

Classification ETIM 6:

ETIM 6.0 Class-ID: EC000438

Last Update (25.04.2024)

©2024 Lapp Group - Technical changes reserved

Product Management www.lappkabel.de

You can find the current technical data in the corresponding data sheet.

PN 0456 / 02_03.16

EPIC® K 4/0

	ETIM 6.0 Class-Description: Contact insert for industrial connectors
Rated voltage (V):	830 V Power
Rated impulse voltage:	8 kV
Rated current (A):	80 A Power
Pollution degree:	3
Flammability:	UL94 V-0
Contact resistance:	< 5 mOhm
Number of contacts:	4 + PE
Termination methods:	Screw termination: 1.5 - 16.0 mm ² (power contact)
Stripping length (mm):	16 mm (Power)
Material:	PC, polycarbonate
Cycle of mechanical operation:	500
Certifications:	UL-tested: UL File Number: E75770
Temperature range:	-40°C to +125°C

Note

PE connection with a 16mm² wire only with the recommended ring lug 44424029

The inserts must be used with the appropriate housings

Photographs and graphics are not to scale and do not represent detailed images of the respective products.

Prices are net prices without VAT and surcharges. Sale to business customers only.

To connect stranded conductors, use an end sleeve.



EPIC® K 4/0

Article number	Article description	Contact type	Number of operating contacts	Pieces / PU
EPIC® 4/0 screw termination				
44424041	EPIC® K 4/0 SS	male	4 + PE	10
44424042	EPIC® K 4/0 BS	female	4 + PE	10

Last Update (25.04.2024)

©2024 Lapp Group - Technical changes reserved

Product Management www.lappkabel.de

You can find the current technical data in the corresponding data sheet.

PN 0456 / 02_03_16

EPIC® K 4/0

