

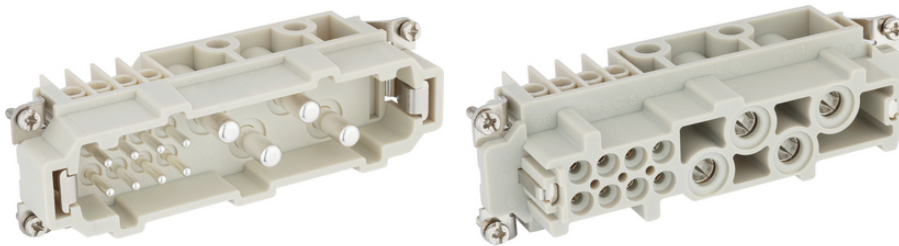
EPIC® K 4/8

Combination insert Power and Control

The combined insert for power and control is suitable for the transmission of high power combined with electrical signals. It finds application in very many areas of industry.

Info

4-pole power insert for rectangular connector with 8 additional signal contacts



Supplementary automation components from Lapp



Mechanical and plant engineering



Wind Energy



Temperature-resistant

Benefits

Power and control in one connector insert
Best in combination with ÖLFLEX® SERVO

Application range

Mechanical engineering
Control engineering
Renewable energy

Technical Data

Classification ETIM 5:

ETIM 5.0 Class-ID: EC000438

ETIM 5.0 Class-Description: Contact insert for industrial connectors

Classification ETIM 6:

ETIM 6.0 Class-ID: EC000438

Last Update (12.07.2024)

©2024 Lapp Group - Technical changes reserved

Product Management www.lappkabel.de

You can find the current technical data in the corresponding data sheet.

PN 0456 / 02_03.16

EPIC® K 4/8

Rated voltage (V):	IEC: 400 V UL: 600 V CSA: 600 V
Rated impulse voltage:	6 kV
Rated current (A):	80 A Power 16 A Control
Pollution degree:	3
Flammability:	UL94 V-0
Contact resistance:	< 5 mOhm
Number of contacts:	4 + 8 + PE
Termination methods:	Screw termination: 1.5 - 16.0 mm ² (power contact) Screw termination: 0.5 - 2.5 mm ² (control contact)
Stripping length (mm):	14 ± 0.5 mm (Power) 6 ± 0.5 mm (Control)
Material:	PC, polycarbonate
Cycle of mechanical operation:	500
Certifications:	UL-tested: UL File Number: E75770
Temperature range:	-40°C to +125°C

Note

PE connection with a 16mm² wire only with the recommended ring lug 44424029

The inserts must be used with the appropriate housings

Photographs and graphics are not to scale and do not represent detailed images of the respective products.

Prices are net prices without VAT and surcharges. Sale to business customers only.

To connect stranded conductors, use an end sleeve.



EPIC® K 4/8

Article number	Article description	Contact type	Number of operating contacts	Packaging unit
EPIC® K 4/8 screw termination				
44424053	EPIC® K 4/8 SS	male	4 + 8 + PE	10
44424054	EPIC® K 4/8 BS	female	4 + 8 + PE	10

Last Update (12.07.2024)

©2024 Lapp Group - Technical changes reserved

Product Management www.lappkabel.de

You can find the current technical data in the corresponding data sheet.

PN 0456 / 02_03_16