

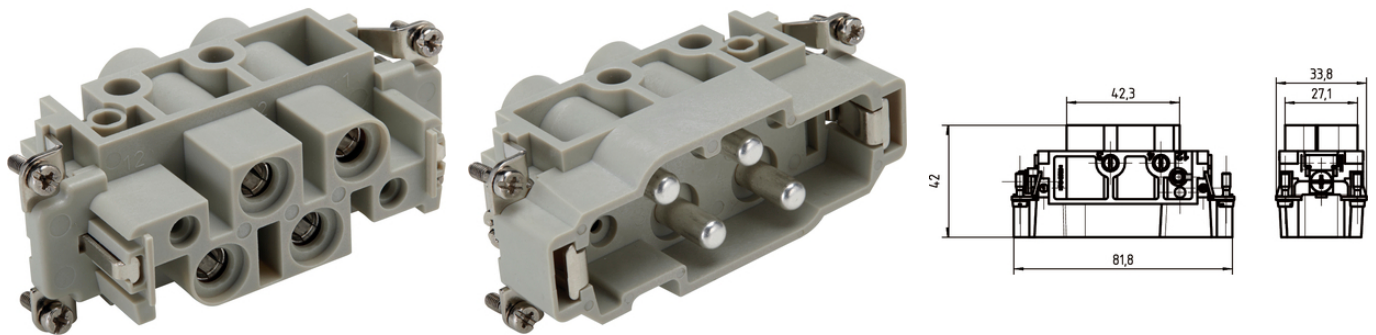
## EPIC® Power K 4/0

Combination insert Power

The combined insert ensures a very high power output concentrated in a single insert and is ideal in combination with the ÖLFLEX SERVO cable.

### Info

Combination insert Power



Mechanical and plant engineering



Wind Energy



Temperature-resistant

### Benefits

High power in one connector insert

Best in combination with ÖLFLEX® SERVO

### Application range

Mechanical engineering

Renewable energy

Control engineering

### Technical Data

Classification ETIM 5:

ETIM 5.0 Class-ID: EC000438

ETIM 5.0 Class-Description: Contact insert for industrial connectors

Classification ETIM 6:

ETIM 6.0 Class-ID: EC000438

ETIM 6.0 Class-Description: Contact insert for industrial connectors

Rated voltage (V):

830 V Power

Last Update (15.02.2020)

©2020 Lapp Group - Technical changes reserved

Product Management [www.lappkabel.de](http://www.lappkabel.de)

You can find the current technical data in the corresponding data sheet.

PN 0456 / 02\_03.16

## EPIC® Power K 4/0

|                                |   |
|--------------------------------|---|
| Rated impulse voltage:         | 8 kV  |
| Rated current (A):             | 80 A Power  |
| Pollution degree:              | 3   |
| Flammability:                  | UL94 V-0  |
| Contact resistance:            | < 5 mOhm  |
| Number of contacts:            | 4 + PE  |
| Termination methods:           | Screw termination: 1.5 - 16.0 mm <sup>2</sup> (power contact) |
| Stripping length (mm):         | 16 mm (Power)   |
| Material:                      | PC, polycarbonate   |
| Cycle of mechanical operation: | 500   |
| Certifications:                | UL-tested:<br>UL File Number: E75770                          |
| Temperature range:             | -40°C to +125°C   |

### Note

PE connection with a 16mm<sup>2</sup> wire only with the recommended ring lug 44424029

The inserts must be used with the appropriate housings

Photographs and graphics are not to scale and do not represent detailed images of the respective products.

Prices are net prices without VAT and surcharges. Sale to business customers only.

To connect stranded conductors, use a end sleeve.

**EPIC® Power K 4/0**

| Article number              | Article description | Contact type | Number of operating contacts | Pieces / PU |
|-----------------------------|---------------------|--------------|------------------------------|-------------|
| EPIC® 4/0 screw termination |                     |              |                              |             |
| 44424041                    | EPIC® K 4/0 SS      | male         | 4 + PE                       | 10          |
| 44424042                    | EPIC® K 4/0 BS      | female       | 4 + PE                       | 10          |

Last Update (15.02.2020)

©2020 Lapp Group - Technical changes reserved

Product Management [www.lappkabel.de](http://www.lappkabel.de)

You can find the current technical data in the corresponding data sheet.

PN 0456 / 02\_03.16

## EPIC® Power K 4/0

