

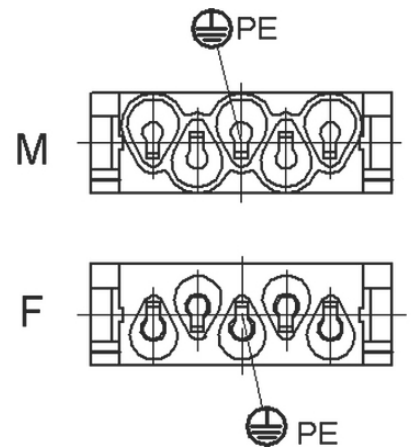
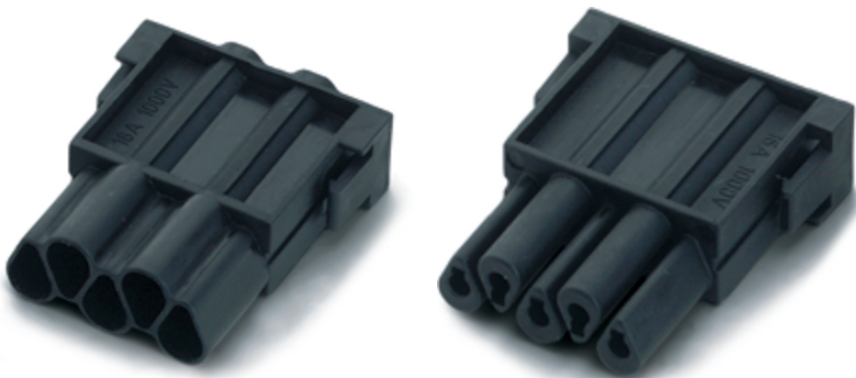
EPIC® MC module: HC4+PE

The mixed assembly guarantees high flexibility. For applications in machine and plant engineering, for robotics and slide-in technology.

The high-voltage signal and power module combine a greater number of functions, which ensures a high level of flexibility. It can be used, for example, in robotics.

Info

Suitable for processing with contacts on reel for automated production with crimping machine



Supplementary automation components from Lapp



Mechanical and plant engineering



Wind Energy

Benefits

The mix of different functions in one plug guarantees high flexibility
 Assembly of individual connectors, suitable for different applications

Application range

Plant engineering
 Printing machines
 Control engineering

Technical Data

Classification ETIM 5:

ETIM 5.0 Class-ID: EC002641

ETIM 5.0 Class-Description: Modular connector (industrial connector)

Classification ETIM 6:

ETIM 6.0 Class-ID: EC002641

ETIM 6.0 Class-Description: Modular connector (industrial connector)

Rated voltage (V):

1000 V

Rated current (A):

16 A

Last Update (12.07.2024)

©2024 Lapp Group - Technical changes reserved

Product Management www.lappkabel.de

You can find the current technical data in the corresponding data sheet.

PN 0456 / 02_03.16

EPIC® MC module: HC4+PE

Pollution degree:	3
Contact resistance:	< 2 mOhm
Contacts:	Copper alloy, hard silver-plated
Number of contacts:	4 + PE
Termination methods:	Crimp termination: 0.5 - 2.5 mm ²
Cycle of mechanical operation:	100
Temperature range:	-40°C to +100°C, short-term up to +125°C

Note

Photographs and graphics are not to scale and do not represent detailed images of the respective products. Prices are net prices without VAT and surcharges. Sale to business customers only.

EPIC® MC module: HC4+PE

Article number	Article description	Contact type	Number of operating contacts	Slots	Packaging unit
Module: high voltage 4-pin + PE					
10383200	MCS 5 CG	male	4 + PE	1	10
10383300	MCB 5 CG	female	4 + PE	1	10

Last Update (12.07.2024)

©2024 Lapp Group - Technical changes reserved

Product Management www.lappkabel.de

You can find the current technical data in the corresponding data sheet.

PN 0456 / 02_03_16