

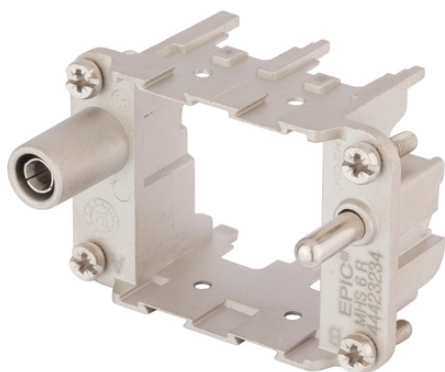
EPIC® MH 6 multi frame

High flexibility by the use of any combination of inserts in one connector

Info

Modular connector system, plugable with the market standard

Frame system for modules



Mechanical and plant engineering



Rail



Solar Energy



Wind Energy



Assembly time

Benefits

Multi frame for own and competition modules

EPIC® MH system is mateable with the market standard

The mix of different functions in one plug guarantees high flexibility

Railway applications

- Fire protection on railway vehicles: Test according EN 45545-2. Requirement sets R22 and R23. Hazard level HL1, HL2 and HL3

PE connection from 1mm² up to 6mm² with end sleeve, 10mm² with adapter

Application range

Mechanical engineering

Robotics industry

Plant engineering

Renewable energy

Railway applications / vehicle construction

Last Update (26.04.2024)

©2024 Lapp Group - Technical changes reserved

Product Management www.lappkabel.de

You can find the current technical data in the corresponding data sheet.

PN 0456 / 02_03.16

EPIC® MH 6 multi frame

Technical Data

Classification ETIM 5:	ETIM 5.0 Class-ID: EC002641 ETIM 5.0 Class-Description: Modular connector (industrial connector)
Classification ETIM 6:	ETIM 6.0 Class-ID: EC002641 ETIM 6.0 Class-Description: Modular connector (industrial connector)
Material:	Zinc die-cast
Cycle of mechanical operation:	500
Temperature range:	-40°C +125°C

Note

Photographs and graphics are not to scale and do not represent detailed images of the respective products.
Prices are net prices without VAT and surcharges. Sale to business customers only.

EPIC® MH 6 multi frame

Article number	Article description	Contact type	Slots	Pieces / PU
44423234	EPIC® MHS 6 R (A,B)	male	2	10
44423235	EPIC® MHB 6 R (a, b)	female	2	10