

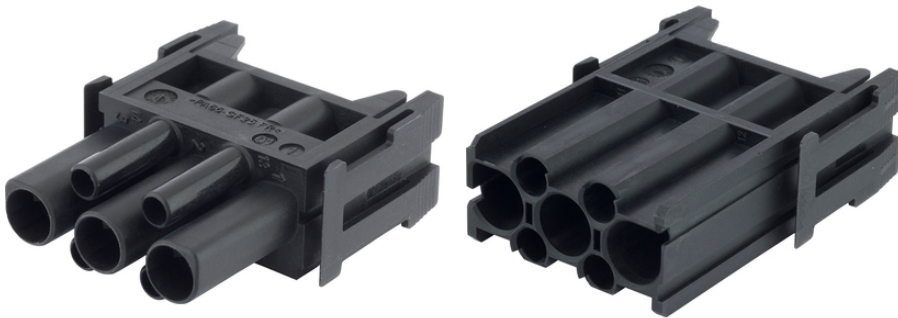
## EPIC® MH 3+4

The mixed assembly guarantees high flexibility. For applications in mechanical and plant engineering, for printing machines and slide-in technology.

EPIC® MH 3+4

### Info

Modular connector system, mateable with the market standard  
Modul with 3 power contacts and 4 signal contacts



Supplementary automation components from Lapp



Mechanical and plant engineering



Rail



Wind Energy

### Benefits

Hybridmodul for energy- and signal transmission in a minimum of space

Crimp connection for permanent vibration proof contacting

EPIC® MH system is mateable with the market standard

The mix of different functions in one plug guarantees high flexibility

Railway applications

- Fire protection on railway vehicles: Test according EN 45545-2. Requirement sets R22 and R23. Hazard level HL1, HL2 and HL3

### Application range

Mechanical engineering

Robotics industry

Plant engineering

Renewable energy

Railway applications / vehicle construction

### Technical Data

Last Update (15.02.2020)

©2020 Lapp Group - Technical changes reserved

Product Management [www.lappkabel.de](http://www.lappkabel.de)

You can find the current technical data in the corresponding data sheet.

PN 0456 / 02\_03.16

## EPIC® MH 3+4

Classification ETIM 5:	ETIM 5.0 Class-ID: EC002641 ETIM 5.0 Class-Description: Modular connector (industrial connector)
Rated voltage (V):	830 V
Rated impulse voltage:	8 kV
Rated current (A):	40 10
Pollution degree:	3
Flammability:	UL94 V-0
Number of contacts:	3 + 4
Termination methods:	Crimp termination: 1.5 - 10 mm <sup>2</sup> Crimp termination: 0.14 - 2.5 mm <sup>2</sup>
Material:	Polyamide, glass fibre-reinforced
Cycle of mechanical operation:	500
Temperature range:	-40°C to +125°C

### Note

Photographs and graphics are not to scale and do not represent detailed images of the respective products. Prices are net prices without VAT and surcharges. Sale to business customers only.



## EPIC® MH 3+4

Article number	Article description	Contact type	Slots	Pieces / PU
44423293	EPIC® MHS 3+4 CM	male	1	10
44423294	EPIC® MHB 3+4 CM	female	1	10

Last Update (15.02.2020)

©2020 Lapp Group - Technical changes reserved

Product Management [www.lappkabel.de](http://www.lappkabel.de)

You can find the current technical data in the corresponding data sheet.  
PN 0456 / 02\_03.16