

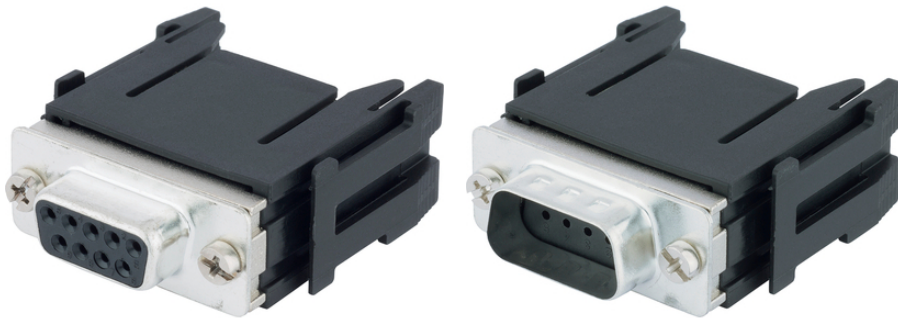
## EPIC® MH D-SUB

The mixed assembly guarantees high flexibility. For applications in mechanical and plant engineering, for printing machines and slide-in technology.

EPIC® MH D-SUB

### Info

Modular connector system, mateable with the market standard D-SUB insert with 9 or 15 contacts



Supplementary automation components from Lapp



Mechanical and plant engineering



Rail



Wind Energy

### Benefits

D-Sub module for signal and data transmission with shielding  
Order contacts separately

### Application range

Mechanical engineering  
Robotics industry  
Plant engineering  
For renewable energy plants e.g. wind power  
Railway applications / vehicle construction

### Technical Data

Classification ETIM 5:

ETIM 5.0 Class-ID: EC002641

ETIM 5.0 Class-Description: Modular connector (industrial connector)

Rated voltage (V):

250 V

Last Update (15.02.2020)

©2020 Lapp Group - Technical changes reserved

Product Management [www.lappkabel.de](http://www.lappkabel.de)

You can find the current technical data in the corresponding data sheet.

PN 0456 / 02\_03.16

**EPIC® MH D-SUB**

Rated impulse voltage:	0,8 kV
Rated current (A):	3
Pollution degree:	3
Flammability:	UL94 V-0
Number of contacts:	9 15
Material:	PA
Cycle of mechanical operation:	500
Temperature range:	-40°C to +85°C

**Note**

Photographs and graphics are not to scale and do not represent detailed images of the respective products.  
Prices are net prices without VAT and surcharges. Sale to business customers only.

**EPIC® MH D-SUB**

Article number	Article description	Contact type	Number of operating contacts	Slots	Pieces / PU
EPIC® MH D-SUB 9 pins					
44423295	EPIC® MHS D-SUB 9 CM	male	9	1	10
44423296	EPIC® MHB D-SUB 9 CM	female	9	1	10
EPIC® MH D-SUB 15 pins					
44423297	EPIC® MHS D-SUB 15 CM	male	15	1	10
44423298	EPIC® MHB D-SUB 15 CM	female	15	1	10

Last Update (15.02.2020)

©2020 Lapp Group - Technical changes reserved

Product Management [www.lappkabel.de](http://www.lappkabel.de)You can find the current technical data in the corresponding data sheet.  
PN 0456 / 02\_03\_16