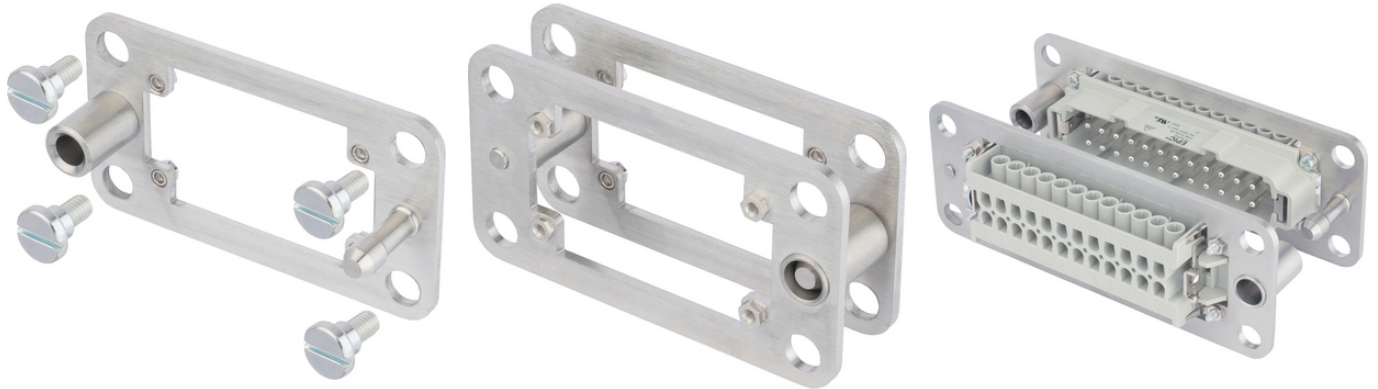


EPIC® Docking frame

The installation system for control cabinets is available as a set or as single components (upper part for the cable connector, lower part for installation to DIN rail).

Info

Mounting system for control cabinets
for float-mounting fixing of the inserts



Application range

Control cabinet manufacturing
Wind power plants

Product features

Scope of delivery per packaging unit: 2 frames with 8 screws
Special screws adapted to frame
Pull-In range in x and y axis: + - 1,5mm

Technical Data

Classification ETIM 5:

ETIM 5.0 Class-ID: EC002312

ETIM 5.0 Class-Description: Contact insert holder for industrial connectors

Classification ETIM 6:

ETIM 6.0 Class-ID: EC002312

ETIM 6.0 Class-Description: Contact insert holder for industrial connectors

Material:

Docking frame: stainless steel

Screws: steel zinc plated

Cycle of mechanical operation:

500

Note

Photographs and graphics are not to scale and do not represent detailed images of the respective products.
Prices are net prices without VAT and surcharges. Sale to business customers only.

EPIC® Docking frame

Article number	Article description	Version	Pieces / PU
44429440	H-B 6 DF	4 fixing screws each included	2
44429441	H-B 10 DF	4 fixing screws each included	2
44429442	H-B 16 DF	4 fixing screws each included	2
44429443	H-B 24 DF	4 fixing screws each included	2

Last Update (26.12.2023)

©2023 Lapp Group - Technical changes reserved

Product Management www.lappkabel.de

You can find the current technical data in the corresponding data sheet.

PN 0456 / 02_03.16