

EPIC® STA 20 Screw termination

The proven STA inserts with spring contacts

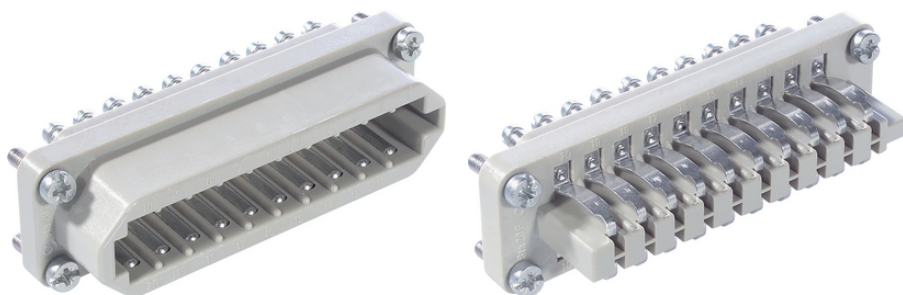
The insert with 20 contacts is suitable for screw termination and is a tried-and-tested choice thanks to its strong contact springs. It is suitable for control systems.

Info

For reliable signal transmission in harsh environmental conditions

Mechanically robust spring contacts

Made in Germany



Mechanical and plant engineering

Benefits

good contact due to the strong contact springs.

The proven STA inserts with spring contacts

Application range

Control systems

Rack technology

Electronic laboratory

Technical Data

Classification ETIM 5:

ETIM 5.0 Class-ID: EC000438

ETIM 5.0 Class-Description: Contact insert for industrial connectors

Classification ETIM 6:

ETIM 6.0 Class-ID: EC000438

ETIM 6.0 Class-Description: Contact insert for industrial connectors

Rated voltage (V):

IEC: 24 V AC, 60 V DC

UL: 48 V

CSA: 48 V

Rated current (A):

IEC: 7 A

Last Update (24.04.2024)

©2024 Lapp Group - Technical changes reserved

Product Management www.lappkabel.de

You can find the current technical data in the corresponding data sheet.

PN 0456 / 02_03.16

EPIC® STA 20 Screw termination

	UL: 7 A
	CSA: 7 A
Pollution degree:	2
Contact resistance:	< 3 mOhm
Contacts:	Copper alloy, tinned
Number of contacts:	20
Termination methods:	Screw termination: 0.5 - 1.5 mm ²
Stripping length (mm):	5
Cycle of mechanical operation:	100
Temperature range:	-40 °C up to +80 °C

Note

Photographs and graphics are not to scale and do not represent detailed images of the respective products.
Prices are net prices without VAT and surcharges. Sale to business customers only.

EPIC® STA 20 Screw termination

Article number	Article description	Contact type	Number of operating contacts	Pieces / PU
STA 20 screw termination				
10501100	STA 20 SS	male	1 - 20	5
10503100	STA 20 FS	Spring	1 - 20	5