

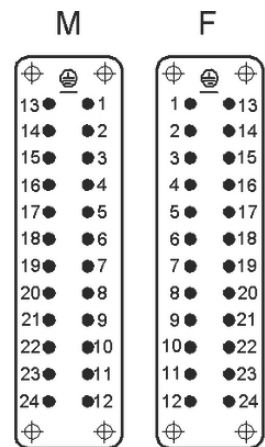
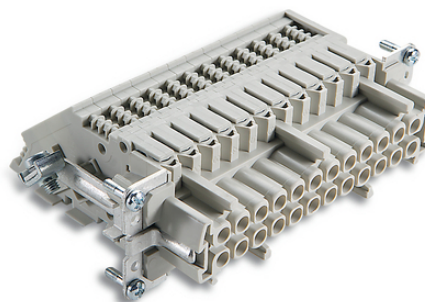
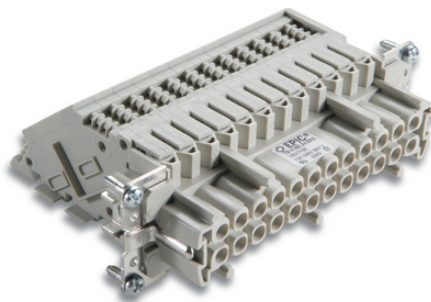
## EPIC® TB-H-BE 24

For convenient, clear wiring in control cabinets.  
Assembly in panel-mount base housings.

The standard insert can be connected with H-BE pin inserts in housing and is suitable for use in control cabinets and investment construction.

### Info

Plug connection for control cabinets



### Benefits

Standard H-BE inserts for use with switch cabinets

Pluggable with H-BE male inserts in hoods

Fastening on side = "left" means that when mounting the terminal adapter on the left wall of a control cabinet, the PE connection and pin "1" are on the "top" side

### Application range

Control cabinet manufacturing

Plant engineering

### Technical Data

Classification ETIM 5:

ETIM 5.0 Class-ID: EC000438

ETIM 5.0 Class-Description: Contact insert for industrial connectors

Classification ETIM 6:

ETIM 6.0 Class-ID: EC000438

ETIM 6.0 Class-Description: Contact insert for industrial connectors

Rated voltage (V):

IEC: 500 VUL: 600 VCSA: 600 V

Rated impulse voltage:

6 kV

Rated current (A):

IEC: 16 A  
UL: 16 A  
CSA: 16 A

Pollution degree:

3

Last Update (26.05.2023)

©2023 Lapp Group - Technical changes reserved

Product Management [www.lappkabel.de](http://www.lappkabel.de)

You can find the current technical data in the corresponding data sheet.

PN 0456 / 02\_03.16

**EPIC® TB-H-BE 24**

Contacts:	Copper alloy, hard silver-plated
Number of contacts:	24 + PE
Termination methods:	Screw termination: 0.5 - 4.0 mm <sup>2</sup>
Stripping length (mm):	13
Cycle of mechanical operation:	200
VDE-tested:	UL-tested: UL File Number: E75770
Temperature range:	-40 °C to +100 °C, short-term up to +125 °C

**Note**

Prices are net prices without VAT and surcharges. Sale to business customers only.

**EPIC® TB-H-BE 24**

Article number	Article description	Contact type	Fastening on side	Number of operating contacts	Pieces / PU
24-pin terminal adapter					
70317100	TB-H-BE 24 BRE	female	right	1 - 24	10
70316100	TB-H-BE 24 BLI	female	left	1 - 24	10

Last Update (26.05.2023)

©2023 Lapp Group - Technical changes reserved

Product Management [www.lappkabel.de](http://www.lappkabel.de)

You can find the current technical data in the corresponding data sheet.

PN 0456 / 02\_03\_16

## EPIC® TB-H-BE 24

