

EPIC® ULTRA H-A 3 EGS

The robust and reliable built in housing as EMC version

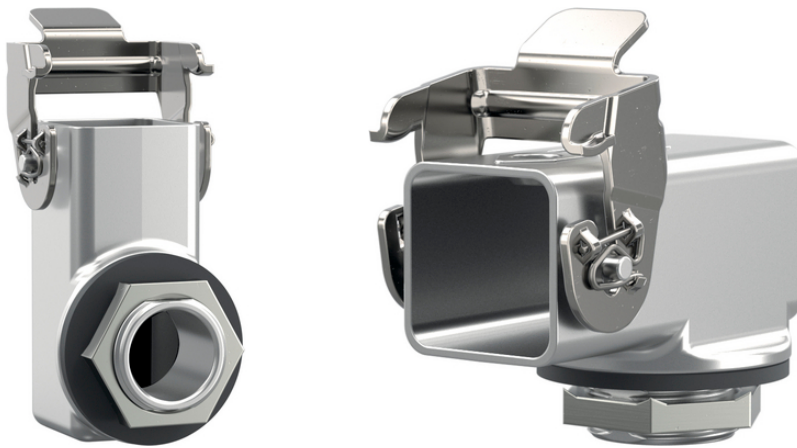
EPIC® Rectangular connector housing EMC protection, corrosion resistant, UL50E, Nema250

Info

EMC protection

Corrosion-resistant

Made in Germany



Supplementary automation components from Lapp



Food & Beverage



Mechanical and plant engineering



Rail



Wind Energy



Suitable for outdoor use



Good chemical resistance



Corrosion-resistant

Last Update (15.07.2024)

©2024 Lapp Group - Technical changes reserved

Product Management www.lappkabel.de

You can find the current technical data in the corresponding data sheet.

PN 0456 / 02_03.16

EPIC® ULTRA H-A 3 EGS



Space requirement



Interference signals



Waterproof

Benefits

The EPIC® ULTRA H-A 3 range comprises the smallest EMC housings in the heavy-duty industrial connector sector and ensures safe plug connections in a small amount of space.

The built-in housing is mateable by many commercially available hood housings.

The arrow as a new design element on the surface of the housing is easy to feel and simplifies plugging in spatially confined and possibly poorly visible application areas.

With straight cable entry for orderly cable routing and to prevent excessive bending of the cable.

Simple mounting on the enclosure by screwing in and fixing with locknut.

Application range

To protect the connector insert from environmental influences.

Especially for environments where the product is getting into contact with water, cleaning agents and saline substances.

Especially for environments where electromagnetic compatibility (EMC) is required.

For use with many EPIC® rectangular connector inserts.

Withstands high environmental and mechanical stresses.

Product features

Screw mounted housing M20, angled, with one cable entry

Resistance to cyclic salt spray is tested according to IEC 68-2-52, severity level 2

Salt spray testing according to DIN EN ISO 9227, method NSS, period of test 480 hours

Corrosion-resistant according to DIN EN 6988

Delivery including stainless steel screw for the inserts

Technical Data

Classification ETIM 5:	ETIM 5.0 Class-ID: EC000437 ETIM 5.0 Class-Description: Housing for industrial connectors
Classification ETIM 6:	ETIM 6.0 Class-ID: EC000437 ETIM 6.0 Class-Description: Housing for industrial connectors
Material:	Housing: nickel-plated zinc diecasting Lever: stainless steel Sealing: NBR
Protection rating:	IP 66 / IP 68 1 meter / 10 hours (locked) NEMA 250, UL50E: 12, 4, 4X (latched)
VDE-tested:	UL: in preparation VDE: in preparation
Temperature range:	-40 °C to +100 °C, short-term up to +125 °C

Note

Photographs and graphics are not to scale and do not represent detailed images of the respective products.

Prices are net prices without VAT and surcharges. Sale to business customers only.

Last Update (15.07.2024)

©2024 Lapp Group - Technical changes reserved

Product Management www.lappkabel.de

You can find the current technical data in the corresponding data sheet.

PN 0456 / 02_03.16



EPIC® ULTRA H-A 3 EGS

Article number	Article description	M	Packaging unit
Screw mounted housing M20, angled, with one cable entry			
10423640	EPIC ULTRA H-A 3 EGS M20	20	10

Last Update (15.07.2024)

©2024 Lapp Group - Technical changes reserved

Product Management www.lappkabel.de

You can find the current technical data in the corresponding data sheet.

PN 0456 / 02_03.16