

Power H-S

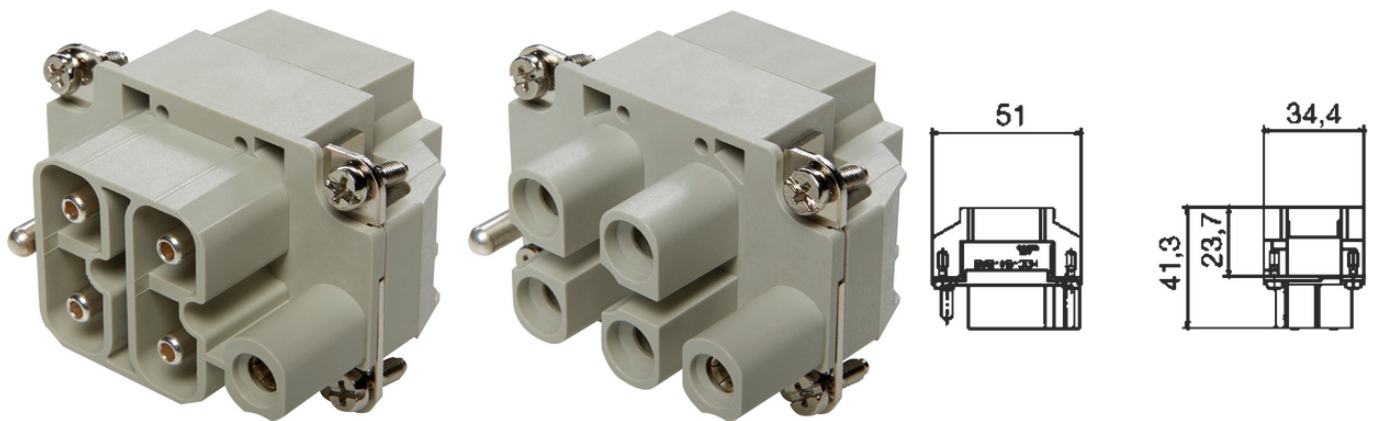
Power inserts

The connector insert is suitable for transmitting high current in small areas. It has axial screw terminations for installation without the special tool.

Info

Very high current transfer in a small space

Axial screw termination for assembly without special tool



Mechanical and plant engineering



Wide clamping range



Temperature-resistant

Benefits

Fast and easy assembly

Very high current transfer

Lower space requirement

Axial screw termination for assembly without special tool

Application range

Mechanical engineering

Plant engineering

Renewable energy

Technical Data

Classification ETIM 5:

ETIM 5.0 Class-ID: EC000438

ETIM 5.0 Class-Description: Contact insert for industrial connectors

Classification ETIM 6:

ETIM 6.0 Class-ID: EC000438

ETIM 6.0 Class-Description: Contact insert for industrial connectors

Rated voltage (V):

IEC: 1000 V AC/DC

Last Update (21.12.2023)

©2023 Lapp Group - Technical changes reserved

Product Management www.lappkabel.de

You can find the current technical data in the corresponding data sheet.

PN 0456 / 02_03.16

Power H-S

	UL: 600 V AC/DC
Rated impulse voltage:	8 kV
Rated current (A):	IEC: 40 A UL: 85 A CSA: 44 A
Pollution degree:	3
Flammability:	UL94 V-0
Contact resistance:	< 1 mOhm
Number of contacts:	4 + PE
Termination methods:	Axial screw termination 2,5 mm ² - 6 mm ² (AWG 14 - 11)
Stripping length (mm):	8
Material:	PC, polycarbonate
Cycle of mechanical operation:	500
Temperature range:	-40°C to +125°C

Note

Prices are net prices without VAT and surcharges. Sale to business customers only.

Power H-S

Article number	Article description	Contact type	Number of operating contacts	Pieces / PU
H-S Axial screw connection				
10407910	H-S 4+2xPE SAS	male	4 + PE	10
10407900	H-S 4+2xPE BAS	female	4 + PE	10

Last Update (21.12.2023)

©2023 Lapp Group - Technical changes reserved

Product Management www.lappkabel.de

You can find the current technical data in the corresponding data sheet.

PN 0456 / 02_03.16

Power H-S

