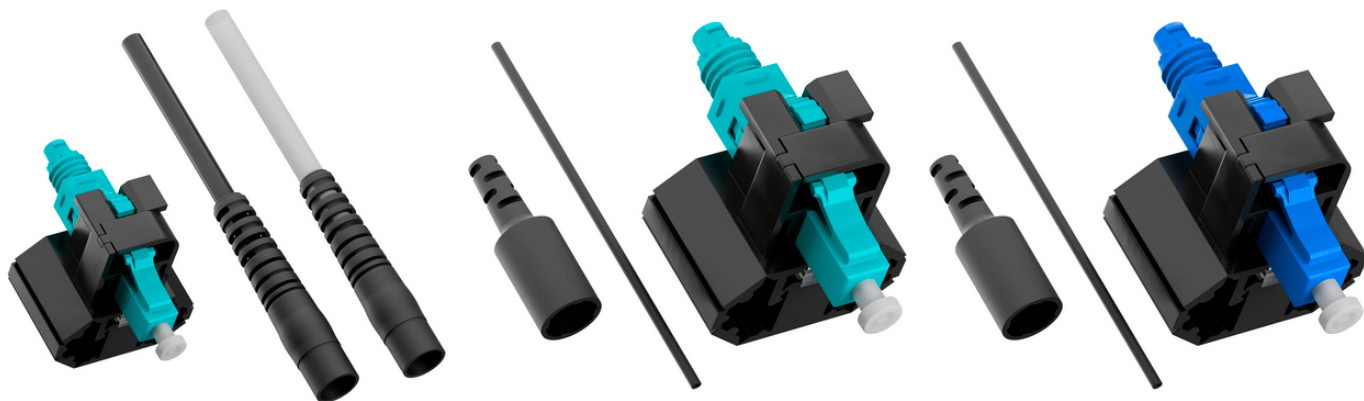


EPIC® DATA FFC-LC-Connector

Optical data connectors suitable for quick and easy field assembly

Optical data connectors suitable for quick and easy field assembly



Benefits

The field-terminable LC connectors for GOF optical fibres are prepared, tested, and ready for installation on site straight from the factory

FFC-System (Fibre Fast Connect) for easy and fast termination even in limited spaces. Complex process steps, special tools, and a lab environment for termination are not required

Connectors can be assembled up to 3 times, making them flexible for various application

Application range

For the creation of a pluggable fibre optic connection

For use in backbone network areas

To be used for cabling buildings and data centers

For use in control cabinets

For use with the EPIC® DATA FFC-LC assembly accessoires and the EPIC® DATA FFC-LC starter kit

Product features

Connector sets include all needed parts for assembly

Serial numbers on each connector ensure complete traceability

refractive index gel for consistent and excellent optical performance

Norm references / Approvals

LC connector end faces according to DIN EN IEC 61754-20

Product Make-up

LC 1.25mm ferrule diameter

Terminable to 0.25 - 0.9mm fibres or 2 - 3mm cables

Can be assembled with cables of

1.7mm-2.1mm diameter

Available in PC, UPC, APC polish types

Compatible with OM3/4 and OS2 fibres

Technical Data

Classification ETIM 5:

ETIM 5.0 Class-ID: EC001122

ETIM 5.0 Class-Description: Fibre optic connector

Last Update (28.04.2024)

©2024 Lapp Group - Technical changes reserved

Product Management www.lappkabel.de

You can find the current technical data in the corresponding data sheet.

PN 0456 / 02_03.16

EPIC® DATA FFC-LC-Connector

Classification ETIM 6:

ETIM 6.0 Class-ID: EC001122

ETIM 6.0 Class-Description: Fibre optic connector

Temperature range:

Operating temperature: -25°C to +70°C

Storage: -25°C to +70°C

Note

Photographs and graphics are not to scale and do not represent detailed images of the respective products.

Prices are net prices without VAT and surcharges. Sale to business customers only.

EPIC® DATA FFC-LC-Connector

Article number	Article designation
38115833	FFC-LC-PC-OM3/4-0.25/0.9-10PCS
38115834	FFC-LC-PC-OM3/4-2/3-10PCS
38115799	FFC-LC-UPC-OS2-0.25/0.9-10PCS
38115800	FFC-LC-UPC-OS2-2/3-10PCS
38115797	FFC-LC-APC-OS2-0.25/0.9-10PCS
38115798	FFC-LC-APC-OS2-2/3-10PCS

Last Update (28.04.2024)

©2024 Lapp Group - Technical changes reserved

Product Management www.lappkabel.de

You can find the current technical data in the corresponding data sheet.

PN 0456 / 02_03_16

EPIC® DATA FFC-LC-Connector

