

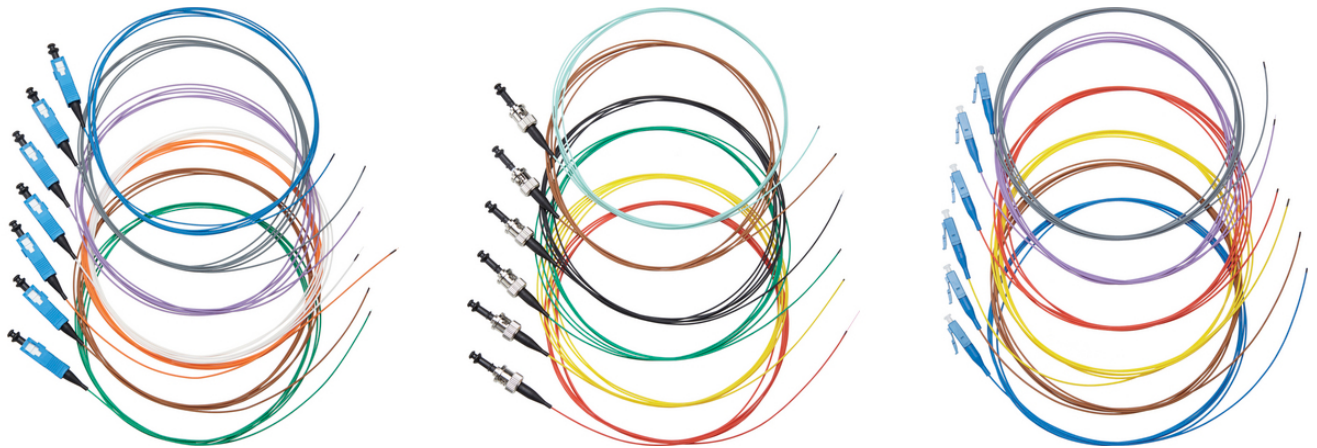
## GOF SIMPLEX Pigtail

12x assorted colour coded pigtails with various types of connectors (LC, ST, LC) with Singlemode OS2 and Multimode OM1, OM2, OM3, OM4 fibres

12x assorted colour coded pigtails with various types of connectors (LC, ST, LC) with Singlemode OS2 and Multimode OM1, OM2, OM3, OM4 fibres

### Info

Pre-assembled simplex tight-buffered optical fibre with a durable ceramic ferrule connector



### Benefits

Ease of installation and assembly

Create a direct plug connection for installation cables with splicing

Zero electromagnetic interference as the cable contains no metal (totally dielectric)

### Application range

For indoor use

Connection to an end optical device

### Product features

High flexibility

Cable termination with durable ceramic ferrules

Set consisting of 12 colour-coded pigtails (red, green, blue, yellow, white, gray, brown, violet, turquoise, black, orange, pink)

### Norm references / Approvals

LC comply with IEC standard 61754-20

SC comply with IEC standard 61754-4

ST comply with IEC standard 61754-2

### Product Make-up

Tight buffered simplex fibres

Connector: LC, SC or ST

Colour-coded primary and secondary coatings

Standard length: 2 m

### Technical Data

Classification ETIM 5:

ETIM 5.0 Class-ID: EC000748

Last Update (20.12.2024)

©2024 Lapp Group - Technical changes reserved

Product Management [www.lappkabel.de](http://www.lappkabel.de)

You can find the current technical data in the corresponding data sheet.

PN 0456 / 02\_03.16

## GOF SIMPLEX Pigtail

Classification ETIM 6:	ETIM 5.0 Class-Description: Pigtail ETIM 6.0 Class-ID: EC000748 ETIM 6.0 Class-Description: Pigtail
Dimensions:	Primary coated fibre: 250µm tight-buffer (secondary coated fibre): 900µm
Fibre type:	GOF - Glass Optical Fibre
Standard designation:	J-VH 1G/E...
Optical fibre type:	Core material: glass Cladding material: glass
Permissible tensile force:	Fixed installation: 100 N
Temperature range:	Fixed installation: -20°C to +60°C Occasional flexing: -5°C to +50°C

### Note

Other types of connectors (e.g. LC, MTRJ, E2000) are available upon request. Judy Lim: This will not apply to Hitronic anymore, as LC will become a standard product and MTRJ/E2000 will be removed.

Photographs and graphics are not to scale and do not represent detailed images of the respective products.

Prices are net prices without VAT and surcharges. Sale to business customers only.

**GOF SIMPLEX Pigtail**

Article number	Article designation
Multimode G 50 OM4	
29310402	GOF Simplex Pigtail SC G50 OM4, 2m
29320402	GOF Simplex Pigtail ST G50 OM4, 2m
29330402	GOF Simplex Pigtail LC G50 OM4, 2m
Multimode G 50 OM3	
29310302	GOF Simplex Pigtail SC G50 OM3, 2m
29320302	GOF Simplex Pigtail ST G50 OM3, 2m
29330302	GOF Simplex Pigtail LC G50 OM3, 2m
Multimode G 50 OM2	
29310202	GOF Simplex Pigtail SC G50 OM2, 2m
29320202	GOF Simplex Pigtail ST G50 OM2, 2m
29330202	GOF Simplex Pigtail LC G50 OM2, 2m
Multimode G 62.5 OM1	
29310102	GOF Simplex Pigtail SC G62.5, 2m
29320102	GOF Simplex Pigtail ST G62.5, 2m
29330102	GOF Simplex Pigtail LC G62.5, 2m
Single-mode E 9 OS2	
29310902	GOF Simplex Pigtail SC E9 OS2, 2m
29320902	GOF Simplex Pigtail ST E9 OS2, 2m
29330902	GOF Simplex Pigtail LC E9 OS2, 2m

Last Update (20.12.2024)

©2024 Lapp Group - Technical changes reserved

Product Management [www.lappkabel.de](http://www.lappkabel.de)

You can find the current technical data in the corresponding data sheet.

PN 0456 / 02\_03\_16