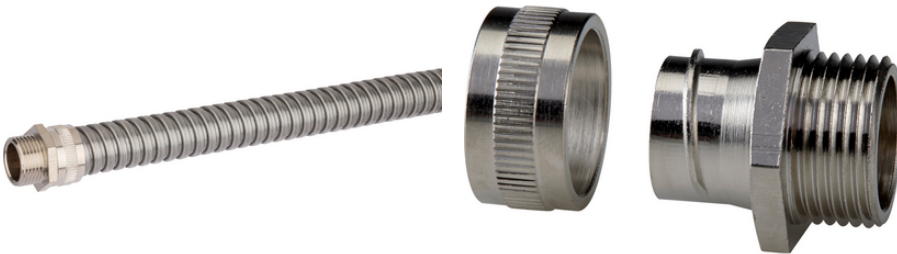


## SILVYN® LGEF-M

SILVYN® LGEF-M is a stainless steel metric threaded conduit fitting for fixed installation



Heat-resistant



Cold-resistant



Corrosion-resistant



Mechanical resistance



Space requirement



Robust

### Benefits

For fixed applications  
High tensile strength  
Space-saving

### Application range

In combination with protective conduit:  
SILVYN® SSU / SSUE  
Applications with high mechanical stress

### Product Make-up

Metric connection thread  
Hexagonal collar  
Cap nut

Last Update (23.04.2024)

©2024 Lapp Group - Technical changes reserved

Product Management [www.lappkabel.de](http://www.lappkabel.de)

You can find the current technical data in the corresponding data sheet.

PN 0456 / 02\_03.16

## SILVYN® LGEF-M

### Technical Data

Classification ETIM 5:	ETIM 5.0 Class-ID: EC001180 ETIM 5.0 Class-Description: Screw connection for protective metallic hose
Classification ETIM 6:	ETIM 6.0 Class-ID: EC001180 ETIM 6.0 Class-Description: Screw connection for protective metallic hose
Certifications:	IEC EN 61386-23
Material:	Nickel-plated brass Stainless steel AISI 316
Protection rating:	IP 40
Temperature range:	-100°C to +400°C

### Note

Photographs and graphics are not to scale and do not represent detailed images of the respective products.  
Prices are net prices without VAT and surcharges. Sale to business customers only.

**SILVYN® LGEF-M**

Article number	Metric size	SW wrench size mm	Overall length mm	Thread length mm	Suitable for SILVYN® SSU / SSUE	Pieces / PU
SILVYN® LGEF-M (Nickel plated brass)						
55503168	12 x 1.5	13	21	7	10	10
55503169	16 x 1.5	17	23	10	12	10
55503170	16 x 1.5	20	25	10	16	10
55503171	20 x 1.5	22	25	10	16	10
55503172	20 x 1.5	24	26.3	10	20	10
55503173	25 x 1.5	29	29.5	10	25	10
55503174	32 x 1.5	36	36.8	13	32	2
55503175	40 x 1.5	48	39	14	40	2
55503176	50 x 1.5	58	42	15	50	1
55503177	63 x 1.5	70	50	18	63	1
55503178	75 x 1.5	84	60	20	75	1
SILVYN® LGEF-M (Stainless steel)						
55503200	12 x 1.5	14	21	7	10	1
55503201	16 x 1.5	19	23	10	12	1
55503202	16 x 1.5	19	25	10	16	1
55503203	20 x 1.5	24	26.3	10	20	1
55503204	25 x 1.5	29	29.5	10	25	1
55503205	32 x 1.5	38	36.8	13	32	1
55503206	40 x 1.5	48	39	14	40	1
55503207	50 x 1.5	58	42	15	50	1

Last Update (23.04.2024)

©2024 Lapp Group - Technical changes reserved

 Product Management [www.lappkabel.de](http://www.lappkabel.de)

You can find the current technical data in the corresponding data sheet.

PN 0456 / 02\_03\_16