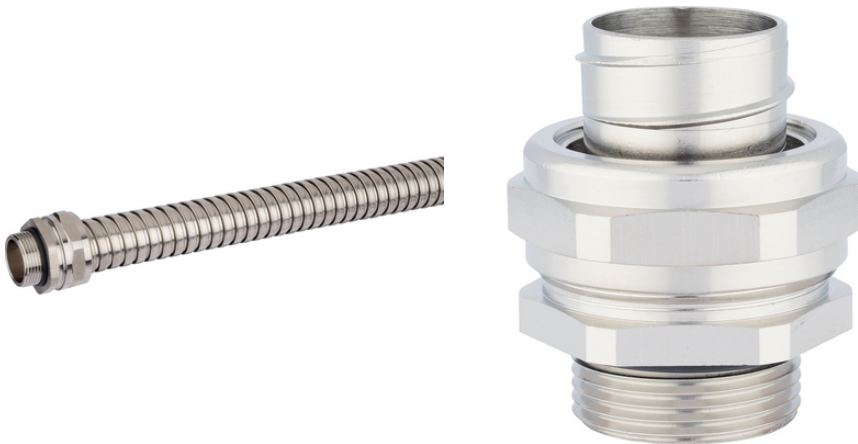


## SILVYN® UI COMPACT M

SILVYN® UI COMPACT M - nickel-plated brass conduit fitting for use with SILVYN® UI 511

### Info

Space-saving due to compact dimensions.



Good chemical resistance



Corrosion-resistant



Mechanical resistance



Robust



Reliability



Temperature-resistant



UV-resistant

### Benefits

High chemical-resistance  
For high mechanical stress  
High tensile strength  
Corrosion-resistant

### Application range

Last Update (12.12.2022)

©2022 Lapp Group - Technical changes reserved

Product Management [www.lappkabel.de](http://www.lappkabel.de)

You can find the current technical data in the corresponding data sheet.

PN 0456 / 02\_03.16

## SILVYN® UI COMPACT M

In combination with protective conduit:  
SILVYN® UI 511

### Product Make-up

Metric connection thread  
Hexagonal collar  
Threaded sleeve  
Cap nut

### Technical Data

Classification ETIM 5:	ETIM 5.0 Class-ID: EC001180 ETIM 5.0 Class-Description: Screw connection for protective metallic hose
Classification ETIM 6:	ETIM 6.0 Class-ID: EC001180 ETIM 6.0 Class-Description: Screw connection for protective metallic hose
Material:	Stainless steel AISI 304 DW no. 1.4301 Nickel-plated brass
Protection rating:	IP 40
Temperature range:	-45 °C to +105 °C (with O-Ring) -55 °C to +260 °C (without O-Ring)

### Note

Photographs and graphics are not to scale and do not represent detailed images of the respective products.  
Prices are net prices without VAT and surcharges. Sale to business customers only.

**SILVYN® UI COMPACT M**

Article number	Metric size	Clear opening (mm)	Suitable for SILVYN® UI 511	Pieces / PU
SILVYN® UI COMPACT M (stainless steel)				
61803880	16 x 1.5	9.8	3/8"	1
61803881	20 x 1.5/1	9.8	3/8"	1
61803882	20 x 1.5/2	13.9	1/2"	1
61803883	25 x 1.5	18.5	3/4"	1
61803884	32 x 1.5	22.8	1"	1
61803885	40 x 1.5	30.8	1 1/4"	1
61803886	50 x 1.5	36.8	1 1/2"	1
61803887	63 x 1.5	47.8	2"	1
SILVYN® UI COMPACT M (nickel-plated brass)				
61803870	16 x 1.5/1	6.8	5/16"	1
61803871	16 x 1.5/2	9.8	3/8"	1
61803872	20 x 1.5/1	6.8	5/16"	1
61803873	20 x 1.5/2	9.8	3/8"	1
61803874	20 x 1.5/3	13.9	1/2"	1
61803875	25 x 1.5	18.5	3/4"	1
61803876	32 x 1.5	22.8	1"	1
61803877	40 x 1.5	30.8	1 1/4"	1
61803878	50 x 1.5	36.9	1 1/2"	1
61803879	63 x 1.5	47.9	2"	1

Last Update (12.12.2022)

©2022 Lapp Group - Technical changes reserved

 Product Management [www.lappkabel.de](http://www.lappkabel.de)

You can find the current technical data in the corresponding data sheet.

PN 0456 / 02\_03\_16