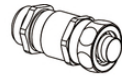
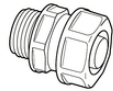


SILVYN® FD-PU

SILVYN® FD-PU is a highly flexible protection conduit made of PUR



SILVYN® MSK-M



SILVYN® USK/USK-M
IP54



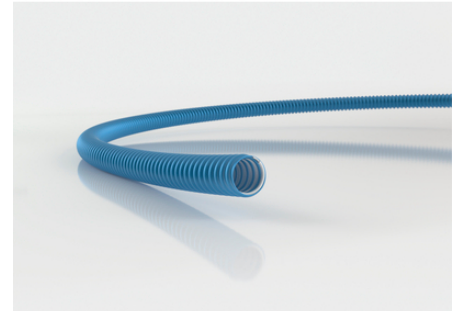
SILVYN® US/US-M + EE-K
IP54



SILVYN® LKI/LKI-M
IP54



SILVYN® EE-K



Suitable for outdoor use



Good chemical resistance



Halogen-free



Oil-resistant



Power chain



Temperature-resistant

Benefits

Dimensionally stable
Highly flexible at cold temperatures
Crushable and extendable
High resistance to oil, petrol, acids and greases
Liquidtight

Application range

For indoor and outdoor use
Mechanical engineering
In drag chains (SILVYN® CHAIN)
Robot-building
Moving applications

Last Update (04.09.2020)

©2020 Lapp Group - Technical changes reserved

Product Management www.lappkabel.de

You can find the current technical data in the corresponding data sheet.

PN 0456 / 02_03.16

SILVYN® FD-PU

Product features

Halogen and cadmium-free
Abrasion and microbe-resistant
Fire behaviour of outer sheath according to UL 94V-2

Product Make-up

PVC-insulated steel spring wire
PUR outer sheath

Note

PU = 50 m (on request)

Technical Data

Classification ETIM 5:	ETIM 5.0 Class-ID: EC001177 ETIM 5.0 Class-Description: Protective plastic hose
Classification ETIM 6:	ETIM 6.0 Class-ID: EC001177 ETIM 6.0 Class-Description: Protective plastic hose
Certifications:	IEC EN 61386-23
Colour delivered:	Metallic blue
Material:	PUR with PVC-insulated spring steel wire Fire behaviour according to UL94 V-2
Temperature range:	-40°C to +80°C

Note

Photographs and graphics are not to scale and do not represent detailed images of the respective products.
Prices are net prices without VAT and surcharges. Sale to business customers only.

SILVYN® FD-PU

Article number	Nominal size	ID x OD mm	Bending radius (mm)	Suitable for SILVYN® USK-M/US-M	Suitable for SILVYN® LKI-M/MSK-M	Suitable for SILVYN® USK/US/LKI/EE-K	PU ring (m)
SILVYN® FD-PU							
64453660	10	7 x 10	8	10 x 1,0	12 x 1,5	7	10
64453670	14	10 x 14	10	12 x 1,5	16 x 1,5	9	10
64453680	17	12.7 x 17.0	13	16 x 1,5	20 x 1,5	11	10
64453690	19	14.7 x 19.0	15	-	-	13,5	10
64453700	21	16 x 21	17	20 x 1,5	25 x 1,5	16	10
64453710	27	21.6 x 27.0	20	25 x 1,5	32 x 1,5	21	10
64453720	36	29 x 36	25	32 x 1,5	40 x 1,5	29	10
64453730	45	38 x 45	36	40 x 1,5	50 x 1,5	36	10
64453750	56	48 x 56	40	50 x 1,5	63 x 1,5	48	10

Last Update (04.09.2020)

©2020 Lapp Group - Technical changes reserved

 Product Management www.lappkabel.de

 You can find the current technical data in the corresponding data sheet.
 PN 0456 / 02_03_16