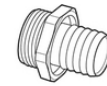
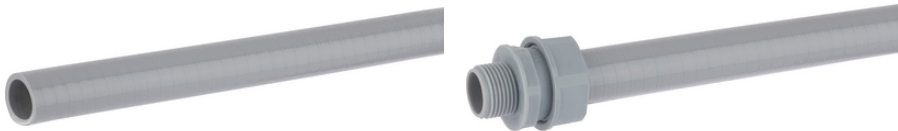
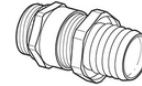


## SILVYN® SP

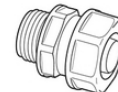
SILVYN® SP - grey PVC conduit



SILVYN® SSV/SSV-M + SCH  
IP 54



SILVYN®  
SSVZ/SSVZ-M + SCH  
IP 54



SILVYN®  
USK/USK-M  
IP 54



SILVYN® SCH



Mechanical resistance



Waterproof

### Benefits

Protection against mechanical stress  
Protection against dust  
Protection against humidity

### Application range

Cable protection  
Additional insulation  
Bundling and guiding of cables and wires

### Product features

Flexible  
Dimensionally stable

### Product Make-up

Hard PVC inner spiral  
Soft PVC outer sheath

### Technical Data

Classification ETIM 5:

ETIM 5.0 Class-ID: EC001177

ETIM 5.0 Class-Description: Protective plastic hose

Classification ETIM 6:

ETIM 6.0 Class-ID: EC001177

ETIM 6.0 Class-Description: Protective plastic hose

Last Update (27.04.2024)

©2024 Lapp Group - Technical changes reserved

Product Management [www.lappkabel.de](http://www.lappkabel.de)

You can find the current technical data in the corresponding data sheet.

PN 0456 / 02\_03.16

**SILVYN® SP**

Certifications:	IEC EN 61386-23
Colour delivered:	Silver grey (RAL 7001)
Material:	Soft PVC with hard PVC spiral, SBR/NBR
Temperature range:	-15 °C to +60 °C

**Note**

Photographs and graphics are not to scale and do not represent detailed images of the respective products.  
Prices are net prices without VAT and surcharges. Sale to business customers only.

**SILVYN® SP**

Article number	ID x OD mm	Bending radius (mm)	Suitable for SILVYN® SSV-M/SSVZ-M	Suitable for SILVYN® USK-M	Suitable for SILVYN® SSV/SSVZ	Suitable for SILVYN® USK	Suitable for SILVYN® SCH	PU ring (m)
SILVYN® SP								
61714000	10.0 x 14.0	50	16 x 1,5/1	12 x 1,5	9/1	9	10 - 16 S	25
61714010	12.0 x 16.0	60	16 x 1,5/2	16 x 1,5	9/2	11	12 - 20 S	25
61714020	14.0 x 18.0	70	20 x 1,5/1	-	11/1	13,5	12 - 20 S	25
61714100	16.0 x 20.0	70	20 x 1,5/2	20 x 1,5	11/2	16	16 - 25 S	25
61714110	22.0 x 27.0	90	25 x 1,5	25 x 1,5	16	21	20 - 32 S	25
61714120	30.0 x 36.0	140	32 x 1,5	32 x 1,5	29/1	29	25 - 40 S	25
61714070	38.0 x 44.0	190	40 x 1,5	40 x 1,5	36	36	32 - 50 S	25
61714080	45.0 x 51.0	240	50 x 1,5	-	42	-	40 - 60 S	25
61714090	49.0 x 56.0	250	63 x 1,5	50 x 1,5	48	48	40 - 60 S	25

Last Update (27.04.2024)

©2024 Lapp Group - Technical changes reserved

 Product Management [www.lappkabel.de](http://www.lappkabel.de)

You can find the current technical data in the corresponding data sheet.

PN 0456 / 02\_03\_16