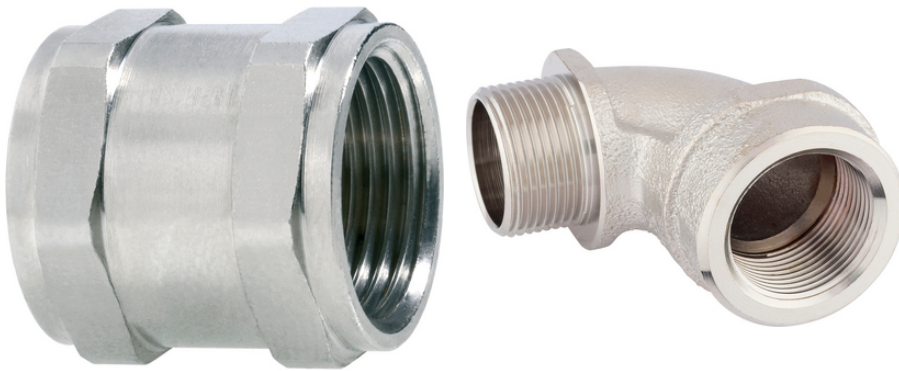


## SILVYN® coupler

SILVYN® coupler is a metric coupler to combine two threads



Assembly time



Reliability

### Benefits

Easy to assemble  
High tensile strength  
Optional extension of all conduits

### Application range

In combination with:  
All metric conduit glands

### Technical Data

Classification ETIM 5:

ETIM 5.0 Class-ID: EC000938

ETIM 5.0 Class-Description: Enlargement/reducing ring

Classification ETIM 6:

ETIM 6.0 Class-ID: EC000938

ETIM 6.0 Class-Description: Enlargement/reducing ring

Material:

Nickel-plated brass

Temperature range:

Dependent on the glands used

### Note

Photographs and graphics are not to scale and do not represent detailed images of the respective products.  
Prices are net prices without VAT and surcharges. Sale to business customers only.

**SILVYN® coupler**

Article number	Article designation	Metric size	SW wrench size mm	Overall length mm	Outer Ø (mm)	Pieces / PU
SILVYN® coupler						
55510000	16	M16 x 1.5	20	22.5	22	10
55510010	20	M20 x 1.5	24	25	26	10
55510020	25	M25 x 1.5	29	30	32	10
55510030	32	M32 x 1.5	35	32.5	38	10
55510040	40	M40 x 1.5	48	34	53	2
55510050	50	M50 x 1.5	58	38	64	1
55510060	63	M63 x 1.5	70	45	77	1
55510070	75	75 x 1,5	84	45	93	1

Last Update (13.12.2022)

©2022 Lapp Group - Technical changes reserved

Product Management [www.lappkabel.de](http://www.lappkabel.de)

You can find the current technical data in the corresponding data sheet.

PN 0456 / 02\_03\_16