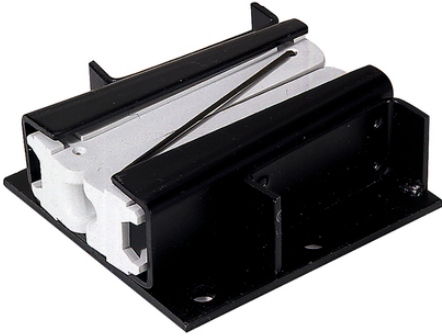


EKK single clamp

EKK single clamp for fastening cables and conductors



Benefits

Secure protection without restricting the mobility of the cable cores
Wide clamping range

Application range

Simple and reliable mounting clamps for lift control cables

Note

Installation guidelines for ÖLFLEX® -LIFT RH and RS lift control cables can be found in the appendix T5
Maximum load for each clamp: 800 N (80 kg)
Only for vertical assembly

Included

Impact anchor, screws and safety discs are supplied as installation accessories

Technical Data

| | |
|------------------------|--|
| Classification ETIM 5: | ETIM 5.0 Class-ID: EC000127 ETIM 5.0 Class-Description: Fixing clip |
| Classification ETIM 6: | ETIM 6.0 Class-ID: EC000127 ETIM 6.0 Class-Description: Saddle |
| Temperature range: | High mechanical load: +65°C Low mechanical load: +100°C |

Note

Photographs and graphics are not to scale and do not represent detailed images of the respective products.
Prices are net prices without VAT and surcharges. Sale to business customers only.

EKK single clamp

| Article number | Article designation | For cable Ø (mm) | Length x width x height (mm) | Weight (kg/piece) | Pieces / PU |
|----------------|---------------------|------------------|------------------------------|-------------------|-------------|
| Single clamp | | | | | |
| 52026000 | EKK 18 | 15 - 18 | 125.0 x 45.0 x 120.0 | 1.4 | 1 |
| 52026011 | EKK 26 | 19 - 26 | 125.0 x 45.0 x 120.0 | 1.4 | 1 |

Last Update (05.09.2020)

©2020 Lapp Group - Technical changes reserved

Product Management www.lappkabel.de

You can find the current technical data in the corresponding data sheet.

PN 0456 / 02_03.16