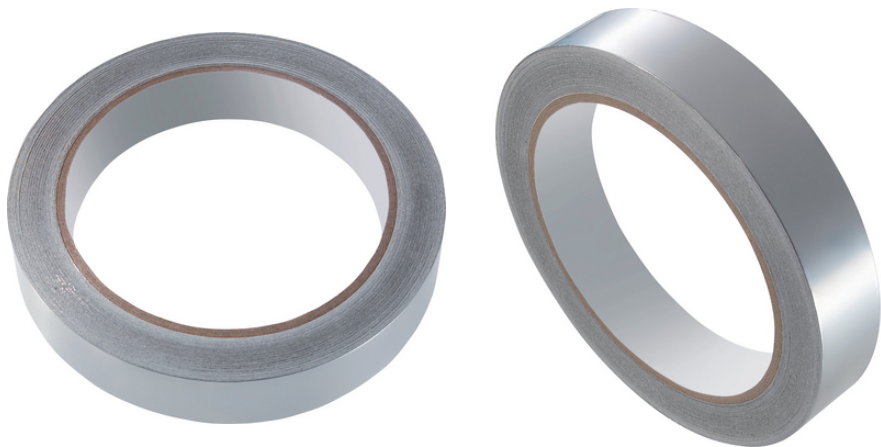


3M Scotch™ 1183 screening tape

3M Scotch™ 1183 screening tape ensure exceptional screening of electromagnetic fields, UL approved.



Flame-retardant



Interference signals

Benefits

Electrically-conductive strip provides exceptional screening of electromagnetic fields

Uniform foil composition and its good conductivity to the substrate ensures low contact resistance, which is crucial for the degree of screening

Solderable and corrosion-resistant

Acrylic adhesive that is resistant to solvents

Application range

Electromagnetic field screening

Electrostatic discharge

Product features

Copper foil is plated with a thin layer of tin

Tin-plating is compatible with a wide range of base materials such as aluminium, lead and tin alloys, and galvanised steels

Norm references / Approvals

UL 510 approved

UL File Number: E17385

Technical Data

Classification ETIM 5:

ETIM 5.0 Class-ID: EC000128

ETIM 5.0 Class-Description: Adhesive tape

Classification ETIM 6:

ETIM 6.0 Class-ID: EC000128

ETIM 6.0 Class-Description: Adhesive tape

Last Update (26.04.2024)

©2024 Lapp Group - Technical changes reserved

Product Management www.lappkabel.de

You can find the current technical data in the corresponding data sheet.

PN 0456 / 02_03.16

3M Scotch™ 1183 screening tape

Caution:	Adhesion (stripping force) : 3.8 N/10 mm Tear strength: 44 N/10 mm
Note:	Contact resistance (in acc. with MIL-STD-202): 0.005 Ω
Info:	Storage: good stability when stored in a cool and dry location (room temperature and approx. 50% relative humidity)
Colour delivered:	Silver grey (RAL 7001)
Material:	Smooth tin-plated copper film as a lining with a conductive acrylic adhesive
Temperature range:	-10 °C to +80 °C

Note

Scotch™ 1183 is a registered trademark of 3M

Photographs and graphics are not to scale and do not represent detailed images of the respective products.

Prices are net prices without VAT and surcharges. Sale to business customers only.

3M Scotch™ 1183 screening tape

Article number	Article designation	Width (mm)	PU (m)
61721420	3M Scotch™ 1183 / 9x16,5	9	16.5
61721421	3M Scotch™ 1183 / 12x16,5	12	16.5
61721422	3M Scotch™ 1183 / 19x16,5	19	16.5
61721423	3M Scotch™ 1183 / 25x16,5	25	16.5